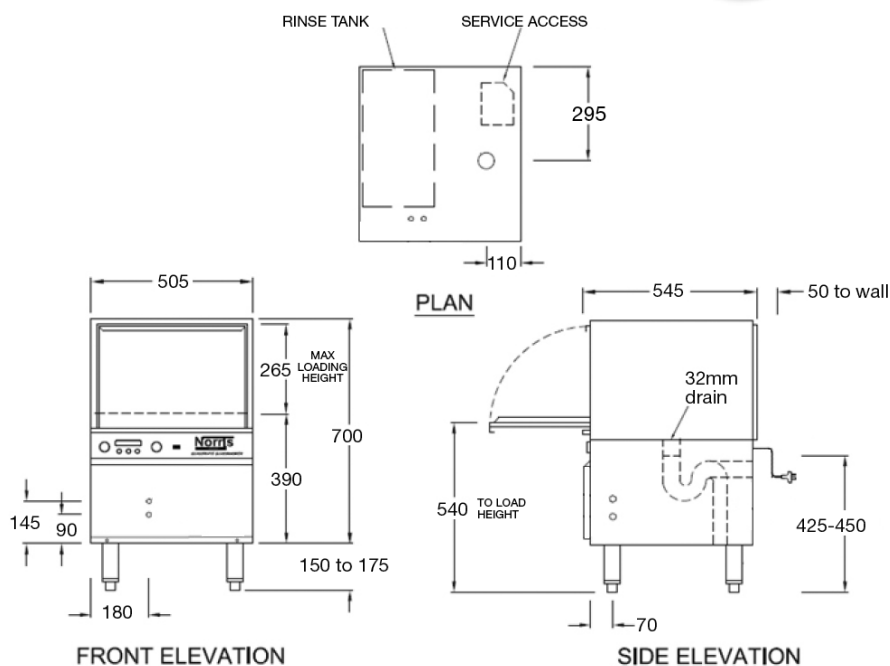


GLASSWASHERS



GLASSMATE



The Glassmate is a tough and reliable glasswasher manufactured to operate under the most demanding conditions. Fit with an optional cooling cycle designed to minimise the turnaround of glassware, this machine will prove to be reliable and dependable in the busiest of work environments. 10 amp version available.

FEATURES

- **Warranty – 2 years on parts and labour, 7 years on the cabinet**
- Compact size suited for modern bars
- Cleans up to 800 glasses per hour
- 30sec quick cycle
- Automatic detergent injection for consistent results and controlled consumption
- Selectable hot and cold rinse for faster turnaround
- Suitable for low pressure areas
- Rinse temperature accurately controlled by the thermostop function
- Adjustable legs to suit bench requirements
- Simplistic visual controls
- Double skinned door reducing heat and noise pollution
- High grade stainless steel welded cabinet for durability
- Australian made

INCLUSIONS

- 1 x Wire glass rack 17"x14"
- 2 x Water connection hose
- 1 x Chemical weight & filter
- 1 x Operating manual

TECHNICAL DATA

Height

Cabinet	695 mm
Cabinet inc. legs	845 - 895 mm
Usable Wash	265 mm

Width

Cabinet	500 mm
---------	--------

Depth

Cabinet	550 mm
With door open	830 mm

Capacities

Loads/Hour	up to 60*
Water per Cycle	6L
Wash Pump	310W
Rinse Pump	N.A
Wash Tank Litres	N.A
Rinse Tank Litres	20
Element (wash)	N.A
Element (rinse)	3000W
Detergent Injection	yes

Temperatures

Rinse Degrees C	82 - 88 °C
-----------------	------------

Plumbing

Drain	32mm Gravity (Drain pump optional)
Water	½" BSP (cold) ½" BSP (hot)

Electrical

Volts/Hz	240V AC/50Hz
Amps	15amps

* Subject to incoming water temperature

