



**Austune Group**  
**Austune Commercial Pty Ltd**  
**Austune Australia Pty Ltd**  
**3/35 Davis Road Wetherill Park 2164**  
**Tel 1800 FRIDGE (37 43 43)**  
**email [info@austunecommercial.com](mailto:info@austunecommercial.com)**

**Austune D Series Cake Display**

**DCL-90-B2**



**FEATURES/ BENEFITS**

**Austune 1800 FRIDGE**

**D Series**

**D Series By Austune 1800 FRIDGE Premium Quality Showcases**

**Digital Temperature Control System**

Provides precise and constant temperature. This level of precision Allows food products to remain fresh over an extended period of time

**High Tech Monitor**

The monitor digitally displays present cabinet temperature. You can easily change the temperature by using the Thermostat

**Hot Gas Condensate System**

Prevents overflow of condensate water

**Efficient Refrigeration System**

R-404A for Displays These include efficient evaporators and condensers for faster Cooling and greater efficiency

**Brilliantly Lit Show case with Sliding Rear or Front Doors Check individual spec**

**Stainless and Glass Exterior and Interior**

Model	Doors	Capacity	Shelves	Amps	Weight	W X D XH (mm)
DCL-90-B2	2	355 Litres	2	3.5	180 kg	900x700x1250



Note : Not To Scale

Design and Specification subject to change Without Notice

**[www.austunecommercial.com](http://www.austunecommercial.com)**



**Tel 1800 FRIDGE (37 43 43)**

**email [info@austunecommercial.com](mailto:info@austunecommercial.com)**

**Austune D Series Cake Display**

**DCL-90-B2**

<b>Spec Sheet</b>	<b>DCL-90-B2</b>
Classification	Show case Display
Orientation	Integrated system
Cooling Type	Ventilated, Self Contained
Compressor (HP)	Danfoss Compressor
Temp range	2c~+8c,
Refrigerant	R404a
Shelves	2 Opaque Glass Plus Base
Display	LED Digital Display
Doors	2 Sliding Rear Doors
Controller	Soft Touch Digital
Internal Light	LED to each shelf
Castors	Lockable Multi Directional
Volume	355 litre
Dimensions	W900x D700x H1250mm
Weight	180 KG
Power	Amps 3.5 Input Power 550W 220V/50Hz 10 Amp Plug



***Self evaporating No Plumbing Required***

**WARRANTY 2 YEARS**  
PARTS & LABOUR

Note : Not To Scale

Design and Specification subject to change Without Notice

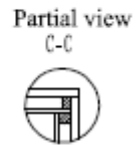
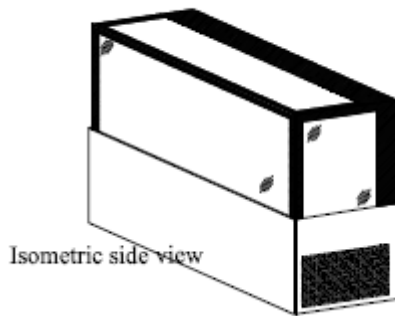
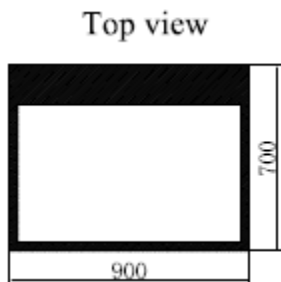
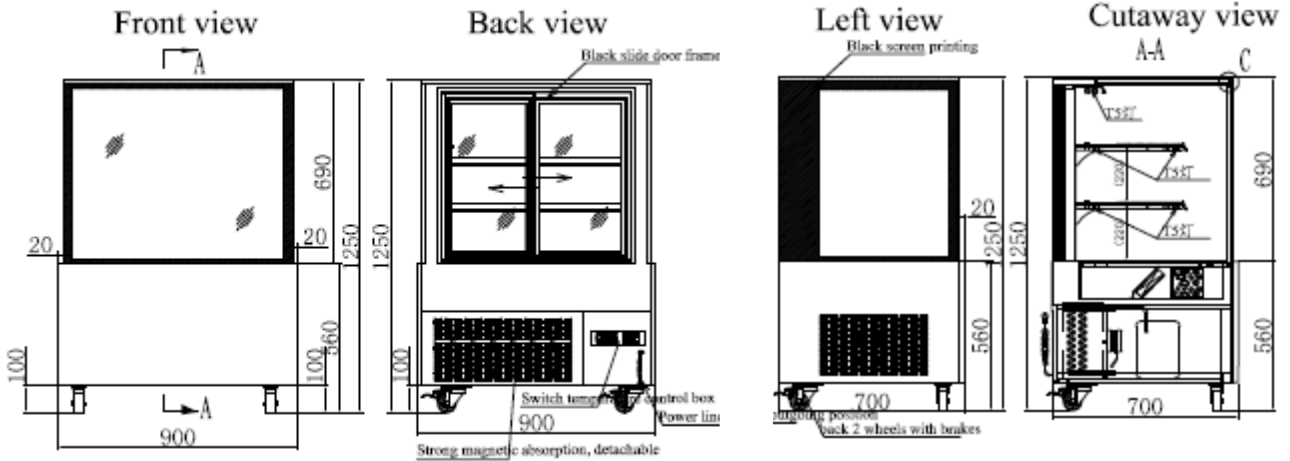
[www.austunecommercial.com](http://www.austunecommercial.com)



**Tel 1800 FRIDGE (37 43 43)**

**email [info@austunecommercial.com](mailto:info@austunecommercial.com)**

**Austune D Series Cake Display** **DCL-90-B2**



- **Self Evaporating System No Plumbing Required**
- Insulation ( CFC Free) High Density**
- Air Intake Rear air discharge**

**WARRANTY 2 YEARS**  
PARTS & LABOUR

Note : Not To Scale  
Design and Specification subject to change Without Notice

[www.austunecommercial.com](http://www.austunecommercial.com)