

4 GAS BURNERS BOILING TOP WITH GAS OVEN

Code
CR0993579

Model
D74/10CGG

Serie
DIAMANTE 70

Project:

Rev.:

Zone:

Location:



we innovate cooking



GENERAL FEATURES

- Diamante 70 is available on the worktop, on a compartment base and on ovens in a range of solutions, ideally suited to a vast range of uses and settings, from the smallest to medium and large kitchens. All tops are laser cut to ensure that all components fit together perfectly.
- • AISI 304 stainless steel, Scotch Brite finish, 1.5 mm worktops
- • Swing door with accessories for holding knives, ladles and bottles
- • Digital control panel with waterproof control knobs
- • Double doors: bottom or side hung
- • Functional side panels with up to 7 containers and holders
- • The modular range: 200-400-600-800-1200
- • Simple, functional coupling system
- • Also available in a plinth-mounted version
- • Wide range of accessories

TECHNICAL DATA

- 4-BURNER GAS RANGE ON GAS OVEN
- Outer casing and feet in stainless steel.
- Adjustable worktop height, ranging from 840 to 900 mm.
- Shaped cooker control panel with knobs slanted towards the operator.
- Nickel-plated top burners with stable flame.
- Thermocouple safety valve with pilot light.
- Acid-resistant black enamelled cast iron burner grates with long spokes suitable for supporting small pots and pans.
- Stainless steel drip bowls.
- Oven heating with stainless steel burner with self-stabilizing flame, and thermostatically-controlled temperature range from 100 to 300°C.

4 GAS BURNERS BOILING TOP WITH GAS OVEN



we innovate cooking

Code
CR0993579

Model
D74/10CGG

Serie
DIAMANTE 70

Technical Information

Specifications	Data
Code	CR0993579
Description	D74/10 CGG 4 FUOCHI FORNO GAS
CODICE COMMERCIALE	D74/10 CGG
Commercial line	DIAMANTE 70
Supply	GAS
Depth	800 MM
Width	730 MM
Height	840/900 MM
Net weight	118 KG
Net volume	0,801 M3
Packaging Depth	850 MM
Packaging Width	840 MM
Packaging Height	1050 MM
Packaging Volume (m ³)	0.75
Gross weight (kg)	124.4
Gas type	GPL 28-30/37 mbar
Gas power (G30/30 mbar)	26,1999999 KW
Gas power (G25/25 mbar)	23,8999999 KW
Certified model	D74/10 CGG
Certification number	CE-0085BU0310
POT GAS TOT / POT FRIGO2	26,1999999
Certification	0085BU0310
Certification body	0085
Type	FORNO GAS

4 GAS BURNERS BOILING TOP WITH GAS OVEN

Code
CR0993579

Model
D74/10CGG

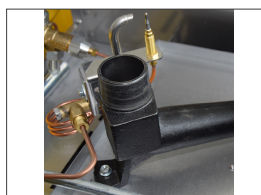
Serie
DIAMANTE 70



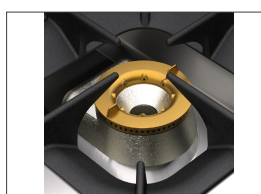
*we*innovate cooking

we cook with
Diamante

Product's PLUS



Right-angle Venturi burner that prevents the nozzle from clogging and collecting dirt.



Nickel-plated cast-iron stabilised flame burners with two-piece flame spreader (improved efficiency of a flame spread over two different sectors), pan rest with long arms for easy placing of small pots and pans.



Removable AISI 304 stainless-steel basin for maximum hygiene.



Gas hobs have a cast-iron radiant ring for uniform heat distribution and electric hobs a stainless-steel one. Stainless steel insulating door and interior door mounted on heavy-duty hinges.



Thanks to the water jet ingress protection rating, awarded after passing specific tests, knobs and knob bezels can be washed at the end of the working day without affecting performance or safety.

Olis Ali Group S.r.l.

Via Del Boscon, 424 - 32100 Belluno - Italy

W: olis.it M: info@olis.it

T: +39 0437 8558

F: +39 0437 838 274



4 GAS BURNERS BOILING TOP WITH GAS OVEN



we innovate cooking

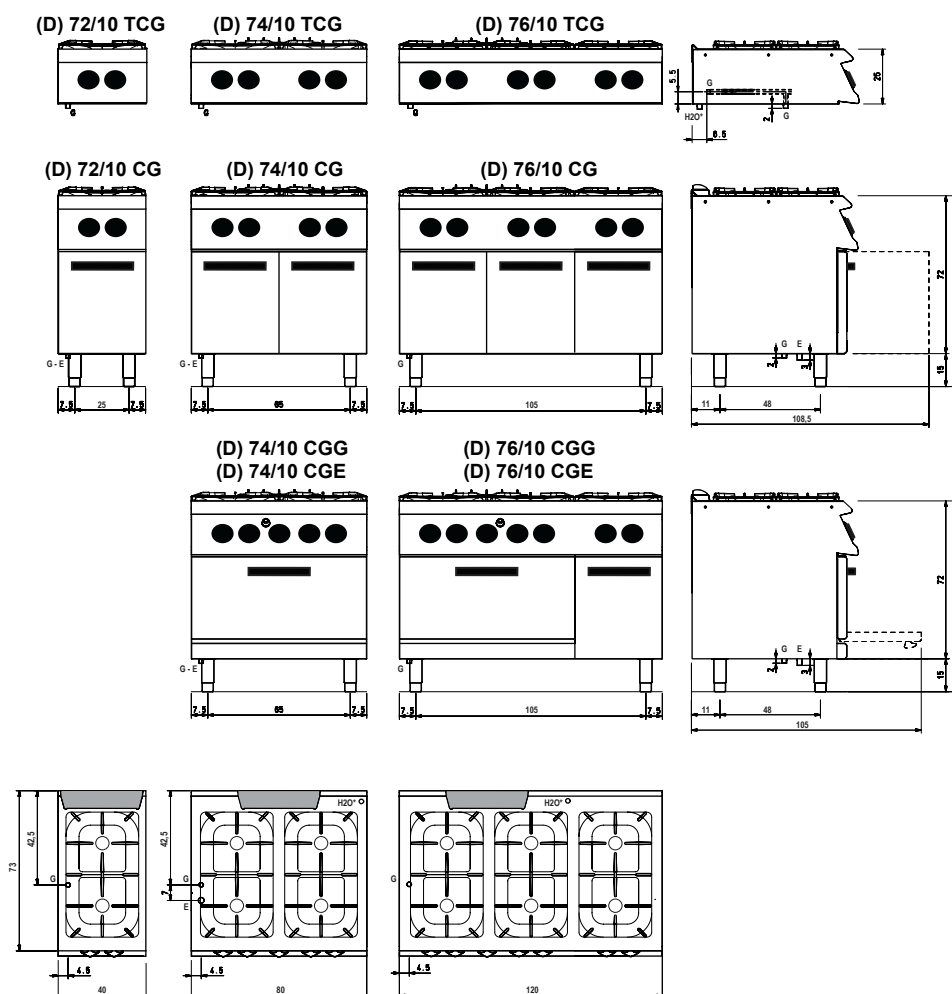
Code
CR0993579

Model
D74/10CGG

Serie
DIAMANTE 70

SCHEMA DI INSTALLAZIONE - INSTALLATION DIAGRAM - INSTALLATIONSPLAN - SCHÉMA D'INSTALLATION - ESQUEMA DE INSTALACION -INSTALLATIESCHEMA - IINSTALLATIONSRITNINGAR

MISURE IN cm - DIMENSIONS IN cm - ABMESSUNGEN IN cm
MESURES EN cm - MEDIDAS EN cm - MATEN IN cm



Legenda - Legende - Key - Légende - Leyenda - Legenda

- E** Pressacavo entrata linea elettrica - Stopfbuchse
Electric cable stress relief - Presse étoupe de câble él
Pisacable - Elektrische kabelwartel
- G** Attacco arrivo gas - Gasanschluss - Gas connection
Arrivée gaz - Union de gas - Gasaansluiting
EN 10226-1 R 1/2; EN ISO 228-1 G 1/2 (DK)
- H2O*** Attacco arrivo acqua - Wasseranschluss - Water inlet
Arrivée eau - Union de agua - Wateraansluiting
EN ISO 228-1 G 3/4