

2-BURNER GAS RANGE ON OPEN CUPBOARD

CODE
CR0995119

MODEL
D92/10CG

SERIE
DIAMANTE90

Project:

Rev.:

Zone:

Location:



*we*innovate cooking



GENERAL FEATURES

- As well as offering a vast range of solutions and 2 mm thick, 90 cm deep worktops with burners up to 10 kW, the series has all the power, robustness and functionality you need to work effectively.
- • AISI 304 stainless steel, Scotch Brite finish
- • Swing door with accessories for holding knives, ladles and bottles
- • Digital control panel with waterproof control knobs
- • Double doors: bottom or side hung
- • Functional side panels with up to 7 containers and holders
- • The modular range: 200-400-600-800-1200
- • Simple, functional coupling system
- • Also available in a plinth-mounted version
- • Wide range of accessories

TECHNICAL DATA

- 2-BURNER GAS RANGE ON OPEN CUPBOARD
- Outer casing and feet in stainless steel.
- Adjustable worktop height, ranging from 840 to 900 mm.
- Shaped cooker control panel with knobs slanted towards the operator.
- Nickel-plated top burners with stable flame. Thermocouple safety valve with pilot light.
- Acid-resistant black enamelled cast iron burner grates with long spokes suitable for supporting small pots and pans.
- Stainless steel drip bowls.

2-BURNER GAS RANGE ON OPEN CUPBOARD



we innovate cooking

CODE
CR0995119

MODEL
D92/10CG

SERIE
DIAMANTE90

TECHNICAL INFORMATION

SPECIFICATIONS	DATA
CODE	CR0995119
DEFINITION	D92/10 CG 2 FUOCHI VANO GIORNO
MODEL	D92/10 CG
SUPPLY	GAS
DEPTH	400 MM
WIDTH	900 MM
HEIGHT	870 MM
NET WEIGHT	49,400
VOLUME	0,313 M3
PACKAGING LENGTH	460,000
PACKAGING WIDTH	1020,000
PACKAGING HEIGHT	1150,000
PACKAGING VOLUME	0,540
PACKAGING GROSS WEIGHT	60,000
GAS POWER (G30/30 MBAR)	10,50 KW
GAS POWER (G25/25 MBAR)	9,00 KW
CERTIFIED MODEL	D92/10 CG
CERTIFICATION NUMBER	CE-0085BS0151
POT GAS TOT / POT FRIGO2	10,50
CERTIFICATION	0085BS0151
CERTIFICATION BODY	0085
TYPE	A GIORNO
NUMBER OF MODULES	1/1 MODULO

2-BURNER GAS RANGE ON OPEN CUPBOARD



we innovate cooking

CODE
CR0995119

MODEL
D92/10CG

SERIE
DIAMANTE90

ACCESSOIRES

CODE	MODEL	DESCRIPTION
SUPBRUC	SUPBRUC	10 KW BURNER EXTRA
MA97365000	XBV-GGN1/1	GRID GN 1/1
MA97375000	XBF-GGN2/1	GRID GN 2/1
MA97377000	XBF9M-G	GRID FOR MAXI OVEN
MA97376900	XBF-TGN2/1	TRAY 2/1
MA97378000	XBF9M-T	TRAY FOR MAXI OVEN
CR1353839	CR1353839	1-BURNER SMOOTH CAST-IRON PLATE
CR1353849	CR1353849	1-BURNER SMOOTH CAST-IRON PLATE
CR0996979	DBVP4	DOOR M40
CR0997009	DBVPA4	ACCESSORIBILE DOOR M40
CR0997029	DAPC	KNIFE HOLDER
CR0997019	DAPD	DOSATOR HOLDER
CR0997039	DAPS	SPICE RACK
CR0997049	DAPM	LADLE HOLDER
CR0997059	DAPDB	DISPENCER HOLDER
CR1353589	DBVC4	DRAWERS KIT
CR0592659	92/10BH	NEUTRAL BASES WITH HYGIENIC FINISHING, TYPE H2
CR1353559	DRG11	GRILL HOLDERS GN 1/1
CR0592329	9FC40	BOTTOM STATIC WARMER
CR0592779	NXZF4	FRONTAL PLINTH
CR0592830	NX9ZG	PLINTH JUNCTION
CR0592820	NX9ZL	LATERAL PLINTH
MA97432000	NXR	CASTORS KIT
MA97433000	NXRI	CASTORS KIT
CR0592940	NX9CAT	WATER TAP
CR0592690	NX9CAM	WATER TAP
CR0592869	CR0592869	KIT 4 FEET FOR CONCRETE PLINTH INSTALLATION
CR0593580	NX9PT	KIT 4 FEET FOR TOP VERSION
CR0592879	CR0592879	KIT ANTI-TIPPING FEET
CR0592399	NXTVT1	CLOSING PANEL FOR TECHNICAL SPACE
CR0592409	NXTVT2	CLOSING PANEL FOR TECHNICAL SPACE
PTD9DX	PTD9DX	SIDE DIAMANTE PANEL RIGHT
PTD9SX	PTD9SX	SIDE DIAMANTE PANEL LEFT

2-BURNER GAS RANGE ON OPEN CUPBOARD

CODE
CR0995119

MODEL
D92/10CG

SERIE
DIAMANTE90



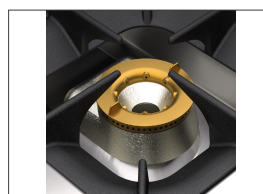
*we*innovate cooking

we cook with
Diamante

Product's PLUS



Right-angle Venturi burner that prevents the nozzle from clogging and collecting dirt.



Nickel-plated cast-iron stabilised flame burners with two-piece flame spreader (improved efficiency of a flame spread over two different sectors), pan rest with long arms for easy placing of small pots and pans.



Removable AISI 304 stainless-steel basin for maximum hygiene.



Thanks to the IPX5 water jet ingress protection rating, awarded after passing specific tests, knobs and knob bezels can be washed at the end of the working day without affecting performance or safety.

Olis Ali Group S.r.l.

Via Del Boscon, 424 - 32100 Belluno - Italy

W: olis.it M: info@olis.it

T: +39 0437 8558 F: +39 0437 838 274



2-BURNER GAS RANGE ON OPEN CUPBOARD



we innovate cooking

CODE
CR0995119

MODEL
D92/10CG

SERIE
DIAMANTE90

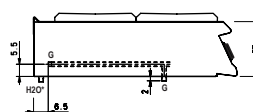
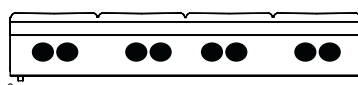
SCHEMA DI INSTALLAZIONE - INSTALLATION DIAGRAM - INSTALLATIONSPLAN - SCHÉMA D'INSTALLATION - ESQUEMA DE INSTALACION -INSTALLATIESCHEMA - IINSTALLATIONSRITNINGAR

MISURE IN cm - DIMENSIONS IN cm - ABMESSUNGEN IN cm
MESURES EN cm - MEDIDAS EN cm - MATEN IN cm

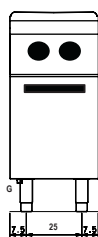
(D) 92/10 TCG
(D) 92/10 TCGP
(D) 92/10 TCG1P



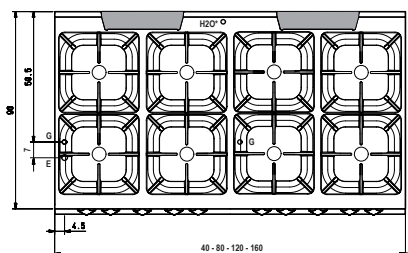
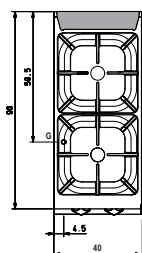
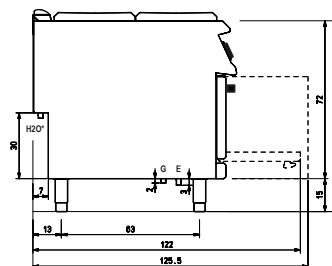
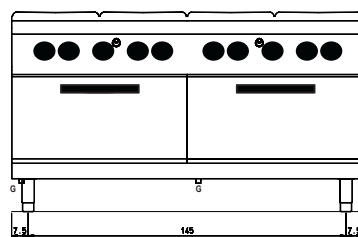
(D) 98/10 TCG
(D) 98/10 TCGP
(D) 98/10 TCG2P



(D) 92/10 CG
(D) 92/10 CGP
(D) 92/10 CG1P



(D) 98/10 CG (D) 98/10 CGG (D) 98/10 CGE
(D) 98/10 CGP (D) 98/10 CGGP (D) 98/10 CGEP
(D) 98/10 CG2P (D) 98/10 CGG2P (D) 98/10 CGE2P



Legenda - Legende - Key - Légende - Leyenda - Legenda

E Pressacavo entrata linea elettrica - Stopfbuchse
Electric cable stress relief - Presse étoupe de câble él
Pisacable - Elektrische kabelwartel

G Attacco arrivo gas - Gasanschluss - Gas connection
Arrivée gaz - Union de gas - Gasaansluiting
EN 10226-1 R 1/2; EN ISO 228-1 G 1/2 (DK)

H20* Attacco arrivo acqua - Wasseranschluss - Water inlet
Arrivée eau - Union de agua - Wateraansluiting
EN ISO 228-1 G 3/4