

# UTENSIL POT WASHERS

## MADISON IM85 R

code: 25-300R



### With Steam Condenser

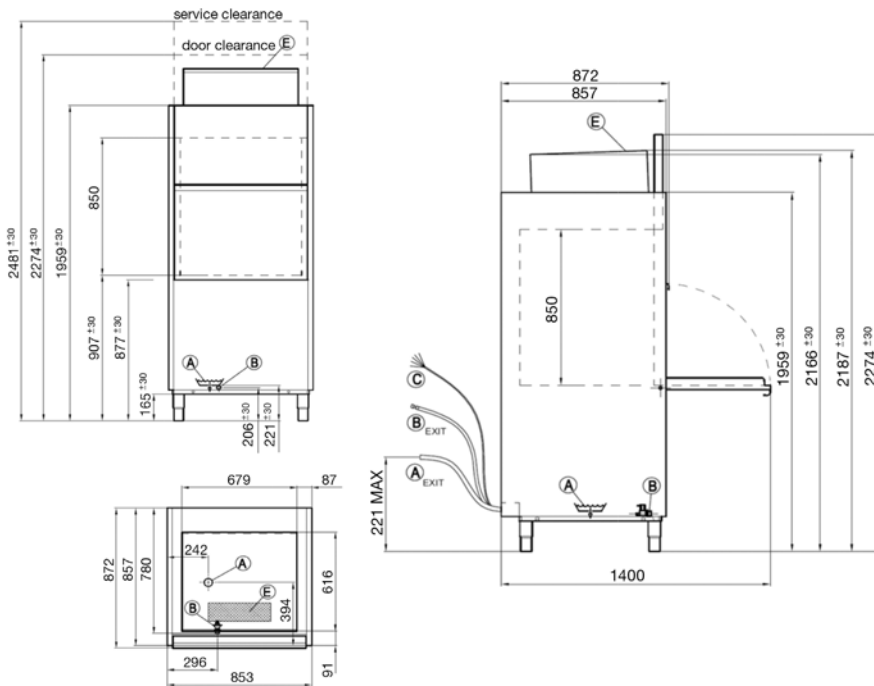
The IM85 R commercial utensil/potwasher with heat recovery is designed to be ergonomically pleasing yet able to take care of the larger items found inside a kitchen. With a 850mm opening, it is ready to take on anything you are willing to throw at it.

### FEATURES

- **Warranty** – 1 year parts and labour, 3 years on the control board & cabinet (see p.28 for conditions & extended warranty offer)
- Energy Saving mode
- Automatic Detergent & Rinse Aid
- Self-Diagnostic system
- 2, 4, 6 & 12 minute wash cycle options
- Low water consumption 4L per rack
- Quick ready function
- Double skinned door

### INCLUSIONS

- 1 x Generic steel basket 700mm x 700mm
- 1 x Water connection hose
- 1 x Steam condenser
- 1 x Operating manual



### TECHNICAL DATA

#### Height

Cabinet inc. legs	2187-2217 mm
With hood extended	2274-2304 mm
Service Height	2480-2570 mm
Usable Wash	820 mm

#### Width

Cabinet	853 mm
---------	--------

#### Depth

Cabinet	857 mm
With door open	1400 mm

#### Capacities

Loads/Hour	up to 30*
Water per Cycle	4L
Wash Pump	2700W
Rinse Pump	200W
Wash Tank Litres	68
Rinse Litres	12
Element (wash)	8000W
Element (rinse)	8000W
Detergent Injection	yes
Rinse Aid Injection	yes

#### Temperatures

Wash Degrees C	60 °C
Rinse Degrees C	82 °C

#### Plumbing

Drain	Gravity
Water	¾" BSP (cold)

#### Electrical

Volts/Hz/Phase	400V/50Hz/3+N
Amps	25Amps/Ph

\* Subject to incoming water temperature

Water pressure requirements are: 10L/min at 200-400 kPa max.

