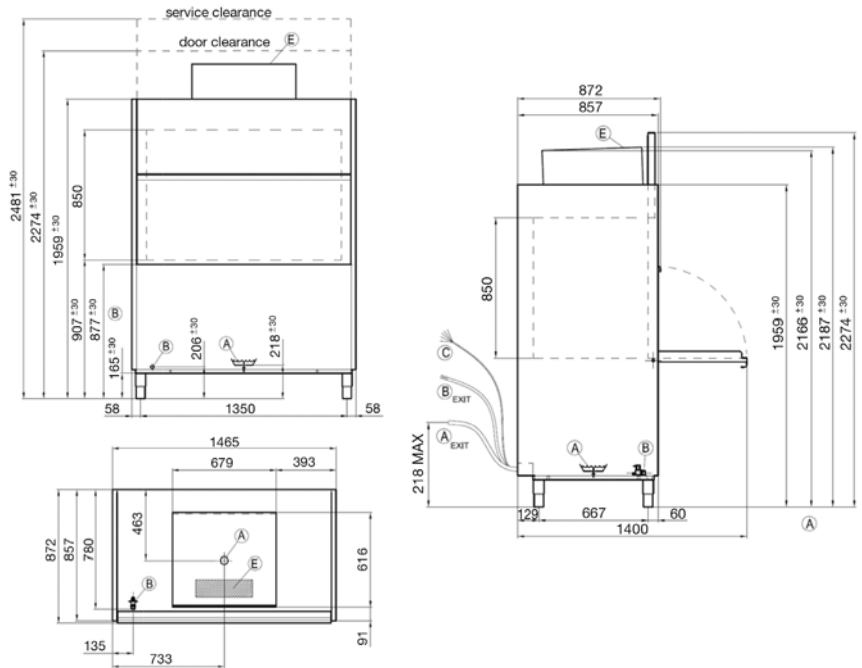


UTENSIL POT WASHERS

MADISON IM1000 R

code: 26-100R



Available With Steam Condenser and Steam Hood

The IM1000 R commercial Utensil/potwasher with heat recovery is perfect for taking on even the biggest items in the kitchen, with its massive 1320 x 700 baskets and 850mm high door opening it is guaranteed to take on the biggest jobs with ease.

FEATURES

- **Warranty** – 1 year parts and labour, 3 years on the control board & cabinet (see p.28 for conditions & extended warranty offer)
- Energy Saving mode
- Automatic Detergent & Rinse Aid
- Self-Diagnostic system
- 2, 4, 6 & 12 minute wash cycle options
- Low water consumption 6L per rack
- Half Load Function
- Double skinned door

INCLUSIONS

- 1 x Generic steel basket 1320mm x 700mm
- 1 x Water connection hose
- 1 x Steam condenser
- 1 x Operating manual

TECHNICAL DATA

Height

Cabinet inc. legs	2187-2217 mm
With hood extended	2274-2304 mm
Service Height	2480-2510 mm
Usable Wash	820 mm

Width

Cabinet	1465 mm
---------	---------

Depth

Cabinet	857 mm
With door open	1400 mm

Capacities

Loads/Hour	up to 30*
Water per Cycle	6L
Wash Pump	2700W x 2
Rinse Pump	200W x 2
Wash Tank Litres	131
Rinse Litres	17
Element (wash)	10500W
Element (rinse)	10500W
Detergent Injection	yes
Rinse Aid Injection	yes

Temperatures

Wash Degrees C	60 °C
Rinse Degrees C	82 °C

Plumbing

Drain	Gravity
Water	¾" BSP (cold)

Electrical

Volts/Hz/Phase	400V/50Hz/3+N
Amps	32Amps/Ph

* Subject to incoming water temperature

Water pressure requirements are: 10L/min at 200-400 kPa max.

